



# NC-AN-16C-T

**Nurse Call Annunciator  
with Code Blue signaling  
16 Point Tone/Visual**



**UL 1069 and CSA C22.2#205  
5002971**

The Tech Works **NC-AN-16C-T** is a 16-Light Intelligent Annunciator panel. Made of white ABS plastic with a removable faceplate, each unit can be custom labeled to identify staff or locations. An integral tone sounds to draw attention to any change of status. A big window allows for large labels of call points. Labels are back-lit so the call point lights up when a station is active.

This is a digital communication device using Intelligent Control Modules for call point monitoring. Each **NC-AN-16C-T** corresponds to an **NC-CM-16** Control Module by simply setting matching addresses. A Control Module monitoring a group of up to 16 Rooms can display these call points in multiple locations – simply place multiple **NC-AN-16C-T** annunciators where needed and set the address to match the Control Module monitoring those rooms.

When a Normal Call comes in from a station the Light will turn on Steady and a single Tone sounds. If an Emergency Call is received from a station the Light will flash and have an associated repeating Tone. Code calls are displayed at a Super-Fast flash rate and a Super-Fast Tone that is twice the speed of an Emergency call. If Supervision is activated on the NC-CM-16 Control Module and communication with a Station is interrupted or lost, lights for that station will slow flash to alert staff to the loss of reporting and a reminder tone will sound every 15-20 seconds until the problem is corrected. Through use of the “Option Switches”, displays can be set to Normal Calls, Emergency Calls, Code Blue Calls, or any combination of call types.

Each **NC-AN-16C-T** has 16 White Lights to the left of each window and 16 White Lights to the right of each window. How these lights react to incoming call is set by a three-position jumper on the main board. See the back of this page for details.

Mechanical mounting is to an industry standard 4 gang electrical box. No special hardware or custom mounting box is required.

## BENEFITS

- Reliable Signaling
- No Maintenance
- Low Power
- Simple Wiring
- Easily Integrates to other Systems
- Attractive Station Hardware

## Associated Equipment

**NC-CM-16** NC-Series Control Module

## Design Information

**Power** 11-25V DC  
**Color** White with Red & White Lights  
**Mounting** 2 or 4 Gang Back Box  
**Dimensions** 8.25" W x 0.75" D x 4.5" H  
**Weight** 1.0 lb.

## Architects' and Engineers' Specifications

The Nurse Call System Annunciator shall be a standard four gang electrical box mounting device constructed of ABS plastic with a water resistant Lexan face plate. A minimum of four columns of four lights shall be provided to allow output from the system. An electronic tone shall sound each time a light changes status. The tone must have an installer removable jumper to permanently disable the electronic tone if so desired. The Annunciator shall be an addressable intelligent electronic device requiring no more than 264 mA at 24 Volts DC for full operation. The Annunciator shall employ EIA standard RS485 digital communication. The system shall operate on two twisted pair parallel wiring. Systems requiring more than two twisted pairs from one station to the next for full operation shall not be considered under this specification.

The Nurse Call Annunciator panel shall be Tech Works Model NC-AN-16C-T



# Tech Works®

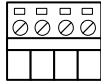
*"Making Specialized Communication Easy"*



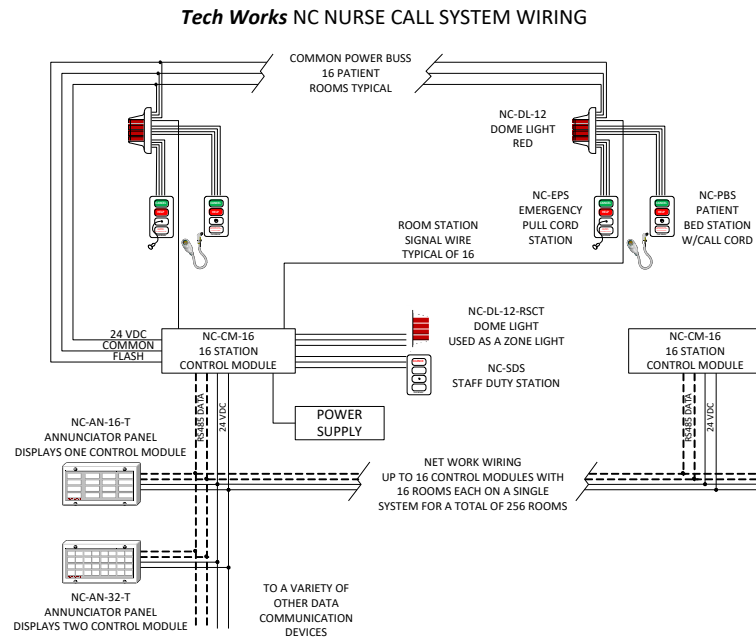
## Quick Start Installation Instructions

W B B  
H L R  
I A E  
T C D  
E K K

T R + -

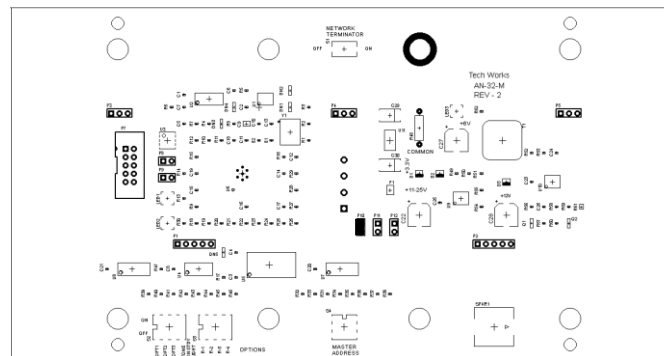


Wiring is four screw terminals to interface to the Tech Works Network. The Network is 2 twisted pair wires. One Pair of wires is Network Communication data and the other pair is power.



Each **NC-AN-16C-T** has 16 White Lights to the left of each window and 16 White Lights to the right of each window. How these lights react to incoming call is set by a three-position jumper on the main board.

Disconnect power from the annunciator. Remove the plastic face cover of the unit. Unplug the top display board from the main control board. You will see 3 jumpers, near the middle of the board, P10, P11, P12.



P10 sets the lights to function as a normal 2 level call system with Emergency Calls going to the left light and Normal Calls going to the right light. Moving the jumper to P11 causes both lights to come on with either an E-Call or an N-Call but the E-Call will mask an N-Call. Moving the jumper to P12 turns the annunciator into a three-level call system and causes the left light to become a Code Blue indicator with Super-Fast Flash and tone, while the right light indicates N-Calls and E-Calls.

For further system set up and adjustment please see the System Planning Guide.

