



# MC-NC2-VP-SAS

**Nurse Call  
Vandal Proof  
Staff Assist HELP Station**

## BENEFITS

- Reliable Signaling
- No Maintenance
- Low Power
- Simple Wiring
- Easily Integrates to other Systems
- Attractive Station Hardware

The Tech Works **MC-NC2-VP-SAS** is a Vandal Resistant Passive Intercom Speaker Station with a Vandal Resistant Push button with concentric Call Assurance Light built in to the button and mounted on a rugged stainless-steel plate. The Speaker Station employs a computer designed speaker/microphone and acoustic coupler that delivers superior speech intelligibility. The speaker/microphone is moisture resistant and employs three steel barriers to protect it from tampering and vandalism. A convenient Push for Help button is provided for activating the Emergency Call directly at the station. Staff is provided with a distinctive "CANCEL" button to reset the station.

An ultra-bright LED call confirmation light lets the caller know that their call has been placed.

The Loudspeaker is a 2-inch frame, 8-ohm voice coil device with a 25 Volt ½ Watt audio transformer for high sensitivity listening and proper matching for articulate speech output.

The 12-gauge stainless steel faceplate and tamperproof mounting hardware makes the **MC-NC2-VPBS** almost indestructible.

## Associated Equipment

MC-IP-116-NC2	Audio Intercom Control Module
MC-DL-22-RW	Dome Light Red/White

## Design Information

<b>Power Taps</b>	25V – ½Watt
<b>Speaker</b>	2" Water Resistant
<b>Call Switch</b>	Normally Open Momentary
<b>Illumination</b>	24V DC LED
<b>Color</b>	Brushed Stainless Steel
<b>Dimensions</b>	4.75" W x 4.75" H x 1.25" D
<b>Mounting</b>	2 Gang Back Box

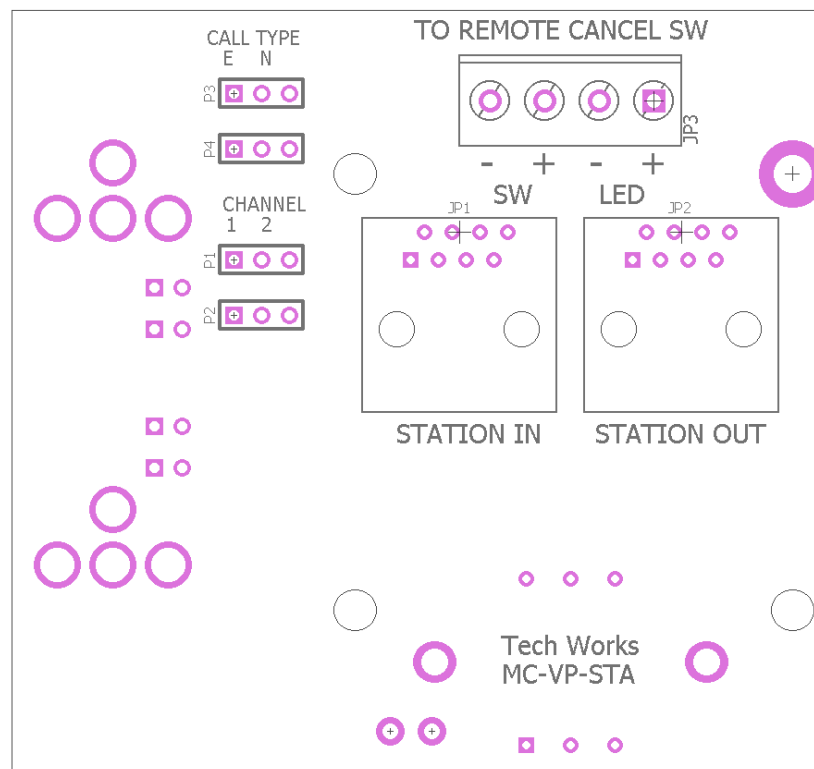


**Tech Works®**

*"Making Specialized Communication Easy"*



## Quick Start Installation Instructions



## Wiring

The MC Stations have a variety of options and features that are unique to each product. All Station wiring is a CAT5 or CAT6 in and out. The installer then chooses if the call is and “E” for Emergency or an “N” for a normal call to set the station priority and the Channel which set the top or bottom of an associated dome light.

Remote Cancel is available for those that want to remotely reset the station via a button or key switch.

## Architects' and Engineers' Specifications

The Nurse Call System Passive Intercom Speaker Station shall be a two gang moisture resistant design employing three steel barriers and a 12 gauge stainless steel faceplate with special mounting hardware to protect it from tampering and vandalism. The integral "Call-Cancel" switch shall be hermetically sealed and utilize a limited travel actuator to protect it from excessive force or moisture and include a concentric LED Call Confirmation Light. A moisture resistant 25 Volt speaker shall deliver clear loud audio as both a microphone and a speaker.

The Nurse Call System Staff Assist Station shall be Tech Works Model MC-NC2-VP-SAS

