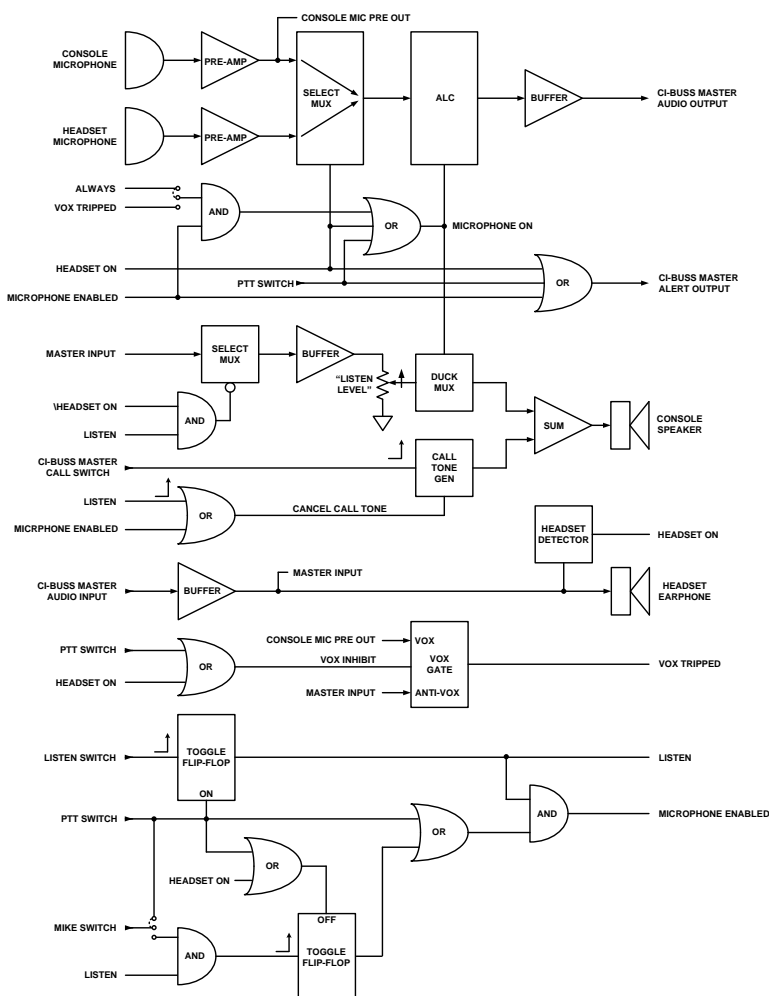




## CI-ODC-1-B QUICK REFERENCE GUIDE

The Tech Works CI-ODC-1-B Operator Desk Console is part of the Collaborative Intercom product group. The Console includes a professional cardioid, condenser, gooseneck microphone, and a speaker. Buttons and indicators provide control to allow the operator to just listen to the CI-Buss communication or to talk, and collaborate hands free. A headset jack on the side of the console allows connection of a local operator headset such as the Plantronics wireless unit.



Basic Operator Console Block Diagram

Isolation Transformers not shown for simplicity.

The CI-BUSS interface allows connection of additional units. The Microphones are processed with ALC to be of constant level and passed to other Units.

The ALC has an indicator for displaying the Microphone level.



# Tech Works®

"Making Specialized Communication Easy"

## Controls and Indicators:



### Front, Vertical Face:

**Power Indicator**, Green when Operating Normally

**Microphone Input Level Indicator/VOX Indicator:**

Off (VOX not tripped), microphone off ; Red, Low audio Level ; Flashing Green; Normal audio level

**Headset On Indicator:** Green when the Operator Wireless Headset is ON;

When the Headset is ON, the Console Microphone, Speaker, and Switches, are disabled.

### Sloped Face:

**LISTEN Switch** (Toggle Action)

**Remote Station Selected Indicator:**

Red when selected - *Controls both the Listening and Talking to the Remote Station*

**Console TALK Switch** (Toggle Action with VOX, or Momentary when Push-to-Talk)

**TALK Indicator:**

Red when Microphone is enabled - *Allows listening without interrupting the Remote Conversation*

### Side:

**Console Speaker Listening Level** (Knob Pot, Side)

*The Console Speaker Level Adjustment is limited, the speaker may not be turned completely off*

## Rear Connections:



**CI-BUSS, "Master" Connector**, RJ-45,

**PA-BUSS, "Output" Connector**, RJ-45

**Footswitch** (Optional), 1/4" TRS Jack - *Used for 'Push-to-Talk' Operation*

**Power Connector:** 3.5mm Barrel Connectors - **24Volts, 1 Amps Maximum**

Chassis, Earth Ground: Hex Nut, the Chassis is connected to Circuit Common through a 1-Meg-Ohm resistor

### Side Connections:

**Headset Connector**, RJ-22, Plantronics, Wireless Headset (Optional)

**The Headset requires initial adjustments (See Headset Datasheet)**

Configuration Switch: "A"

Earphone Switch: "4"

Microphone Switch: "6"

The Console Speaker listening level may be adjusted to be heard throughout the room  
When the Console Microphone is enabled the Console Speaker listening level is reduced to a lower level to prevent feedback

There is a **Remote Call Switch in the Procedure Room to get the attention of the Operator.**

The Call Tone comes through the Console Speaker, only if the Console Microphone is not enabled

*If the Procedure Room is in a Conversation with the Operator, it is assumed the Call Switch will not be used*

### **There are two Operational Configurations**

#### **VOX (Voice Activated), or Push-to-Talk, Microphone**

*The user should read the section below that pertains to their configuration*

#### **VOX (Voice Activated Microphone) Operation (Standard Option):**

Basic Console Operation is straightforward and intuitive

When the Operator wants to converse with the Procedure Room

The "**LISTEN**" switch is pushed, the indicator lights Red

If the Operator wants to end the conversation, the "**LISTEN**" switch is pushed again, the indicator goes off

The Operator may disable the microphone with the "**TALK**" Switch", to only listen to the Procedure Room

When the "**TALK**" switch is pushed, the indicator goes off to indicate the Console Microphone is disabled

When the "**TALK**" switch is pushed again, the indicator lights red, to indicate the Microphone is enabled

#### **When the microphone is enabled, the Switchover is Voice Activated (VOX)**

The Operator must speak directly into the Console Microphone

*At a distance of ~6" for proper response*

The "LIMIT/VOX" indicator lights Green to indicate the VOX is tripped

**During normal operation, the "LEVEL/VOX" Indicator flashes Red** to indicate proper microphone level

*If the Operator wants to continue listening without talking the Microphone should be disabled (Push the "**TALK**" Switch again)*

*TALK may only be changed while listening*

*When listening is discontinued the state of TALK is retained*

*This allows the Listen Switch to Control both Listening and Talking*

#### **Push-to-Talk Microphone Operation, (Jumper Option):**

Basic Console Operation is straightforward and intuitive

When the Operator wants to converse with the Procedure Room

The "**LISTEN**" switch is pushed, the indicator lights Red

If the Operator wants to end the conversation, the "**LISTEN**" switch is pushed again, the indicator goes off

When the **TALK** Switch is pressed: The Console Microphone is activated

And the Console Speaker is forced to **Listening**, when the Switch is Released the Console remains **Listening**

*If the Operator wants to discontinue listening the "**LISTEN**" switch should be pressed*

#### **When the microphone is enabled**

The Operator must speak directly into the Console Microphone

*At a distance of ~6" for proper response*

The "LIMIT/VOX" indicator lights Green to indicate the Microphone is on

**During normal operation, the "LEVEL/VOX" Indicator flashes Red** to indicate proper microphone level  
**Operation with Accessories:**

*The PTT Foot Switch allows hands free operation, and overrides VOX if the Environment becomes noisy*

**If the Operator has a Push-to-Talk Foot Switch (Optional)**

**PTT disables VOX mode**

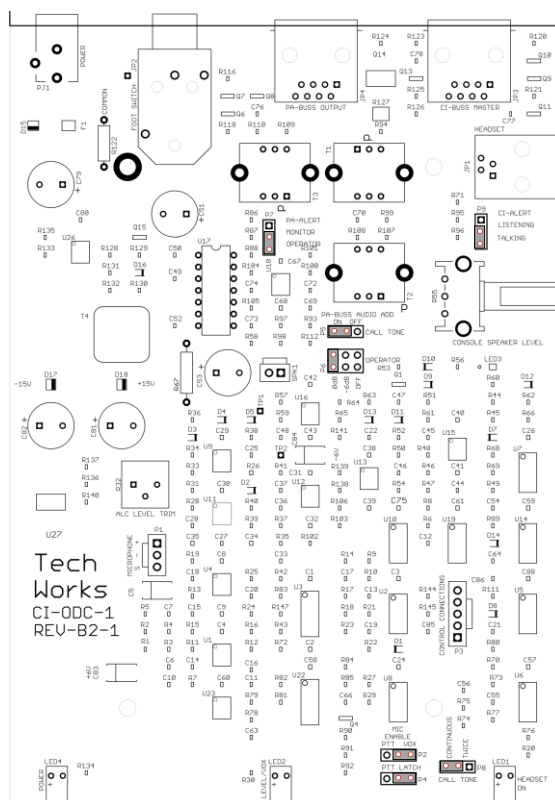
**When the Foot Switch is pressed the Console Microphone is immediately activated**

**When the Foot Switch is Released the Console returns to Listening**

**The Wireless Headset allows the Operator to move about the room, while carrying on a conversation with the Procedure Room**

If the Operator has a **Wireless Headset** (Optional), The Wireless Headset has an ON/OFF switch, **when the Headset is 'Off' the function is the same as above.** The **Headset has priority**, and converses with the Procedure Room when the "HEADSET ON" indicator is lighted; The Console Microphone, Speaker, and Switches, are disabled, *The Listen and Talk indicators are forced off*

### Configuration Jumpers (Console Cover Removed):



### Jumper:

Option				Function
P7 PA-ALERT	MONITOR	OPERATOR		PA-Buss Alert signal sent All the Time or Only When Operator is Enabled?
PA-BUSS Audio P5 Call Tone	ON	OFF		Is the Call Tone sent to the PA-Buss?
PA-BUSS Audio P6 Operator	0dB	-6dB	OFF	How Loud should the Operator be from the PA-Buss? Full, Down Slightly, or Not at All (OFF)
P9 CI-Alert	LISTENING	TALKING		When is the CI-Alert Signal sent?
P2 Mic. Enable	VOX	PTT		Console Mic On Automatic (VOX) or only when the button is Held?
P4 Talk Button	LATCH	PTT		Talk Button Push On/Push Off or Push and Hold

**Cleaning** – If the product becomes dirty and requires cleaning DO NOT USE CLEANING CHEMICALS SUCH AS 409, SIMPLE GREEN, or other solvents. If possible, only use water to make a damp soft cloth and rub lightly to preserve the finish. If further cleaning or disinfecting is required, use only isopropyl alcohol on a soft cloth. Alcohol may dull the finish of the product but will not harm the electronics.